



As the COVID-19 pandemic impacted the world, businesses were affected locally and abroad. Café Asia of Niu Valley, the host of one of the Neighbors' Night Out dinners, was one of the restaurants which have weathered the storm well. Restaurant owner Kylee Lin decided not to lay off employees but rather to keep everyone on staff at reduced hours. They created a new menu to accommodate the changing availability of select food items, and they have restructured their establishment to adapt to the newly implemented restrictions.

After momentarily closing in late March, Café Asia reopened on May first for curbside pickup. They now offer the Bike Squad delivery service and are in the process of adding Doordash and Uber Eats delivery services as well.

On June 5, they proudly reopened to the public, offering dine-in services at 50-percent capacity. In compliance with COVID-19 guidelines, they have rearranged the dining area to provide spacious seating for social distancing. They have added a sanitation station, as well as plexiglass at the cashier counter. Staff members are masked, and customers are asked to wear masks upon entering and exiting the building but may remove their face coverings at their table.

The new menu has the All-You-Can-Eat Shabu Shabu meals, as well as new a-la-carte options. All Lunch Plate Combos come with soup, salad, and rice with prices starting at just \$8.99. When customers buy any two entrées, they can purchase a Dungeness crab entrée for the reduced price of \$16.99. Highlights



of the new menu include house beef stew, garlic chicken katsu, garlic pork chops, sweet garlic chicken (or tofu) with eggplant, coconut curry fish, orange miso chicken, and many, many more.

On Sunday, June 28, the Valencia-Aiken family sampled some of the menu items, starting with the Fried Calamari pupu. The family enjoyed the Mongolian prime top sirloin entrée, the honey walnut shrimp, and the sweet coconut curry Dungeness crab.

"Everything was amazing, absolutely mouthwatering," said resident Robert Valencia-Aiken. "We all ate until we were satisfied, and there was enough food left over our kids had it again for dinner!"

Café Asia welcomes Hawaii Loa Ridge residents to join them again for a delicious meal from their lunch menu from 11 am until 2:30 pm, except for Tuesdays, or dinner from 4:30 pm until 9:00 pm daily. Their All-You-Can-Eat Shabu Shabu prices are as follows: Lunch is \$18.99/adult, \$16.99/seniors 55+, and \$10.99/kids. Dinner is \$27.99/adult, \$23.99/seniors 55+, \$19.99/seniors 65+, and \$12.99/kids ages 5-10.



around town By Kelly Valencia-Aiken, Hawaii Loa Ridge resident





“Everything was **amazing,** absolutely **mouthwatering**”



ESTATE PLANNING OF HONOLULU

- Revocable Living Trusts •
- Wills •
- Power of Attorney Documents •
- Health Care Directives •
- Trust reviews and amendments •

Call me today for a free consultation and learn how to protect your hard earned property from probate.



Michael J. Madison
Attorney at Law
Estate Planning of Honolulu, LLLC
6600 Kalanianaʻole Highway
Suite 114
Honolulu, HI 96825

HALU Flowers Hawaii

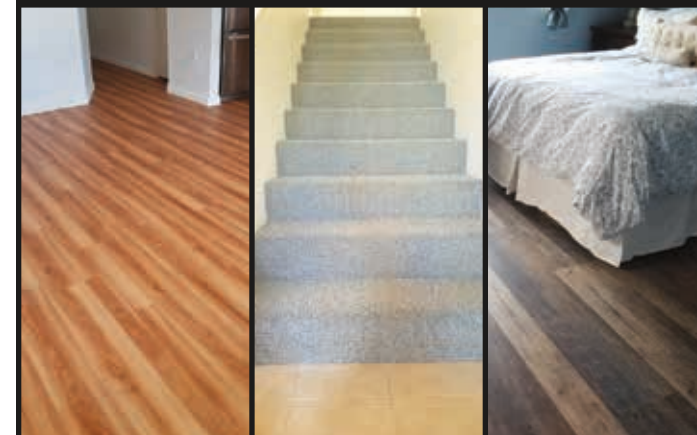
-We're all about flowers-



Services: Custom flower arrangements for any occasions, Special event flowers, Wedding flowers, Custom silk/faux flower arrangement for your home decor

(808) 673-6562

Website: www.haluhawaii.com
Email: hello@haluhawaii.com
Private floral studio in Honolulu, Hawaii



808-428-1213



3478 Waiālae Ave. Honolulu Hawaii 96816
pageacademyofdance.com
pageacademyofdance@gmail.com

Ballet classes starting at ages 18 months - Adult all Levels Beginning -through Advanced Ballet. Contemporary and Modern classes offered to Level 3 ballet students and up.